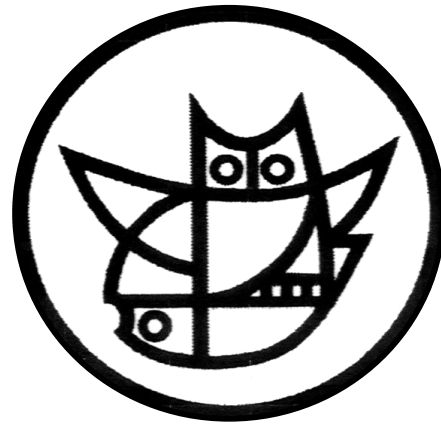


# Anatomie et physiologie lors de l'abattage



Service de contrôle PSA

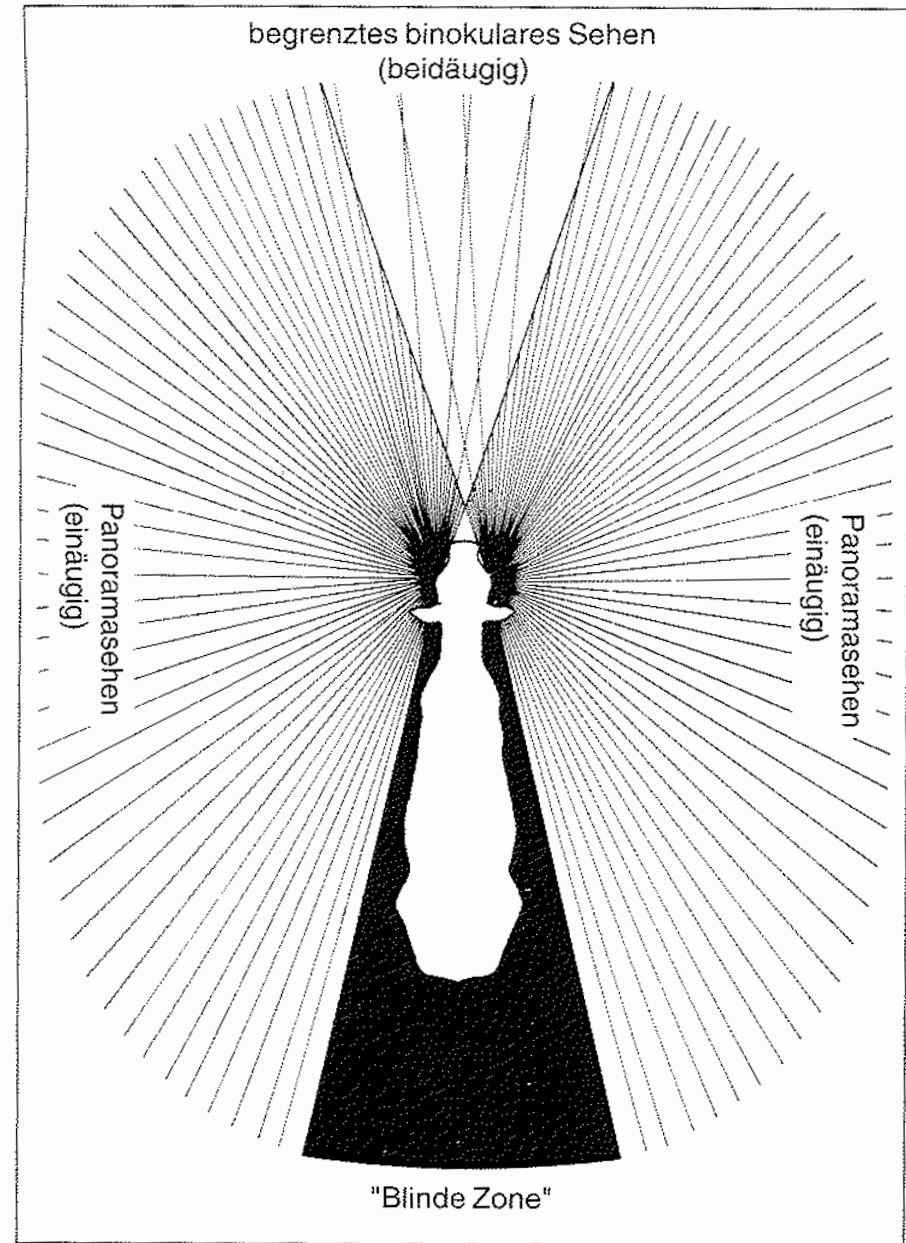
Formation du personnel d'abattoir



# Les yeux



Abb. 2.3. Gesichtsfeld eines Rindes.



# Le cerveau du bovin

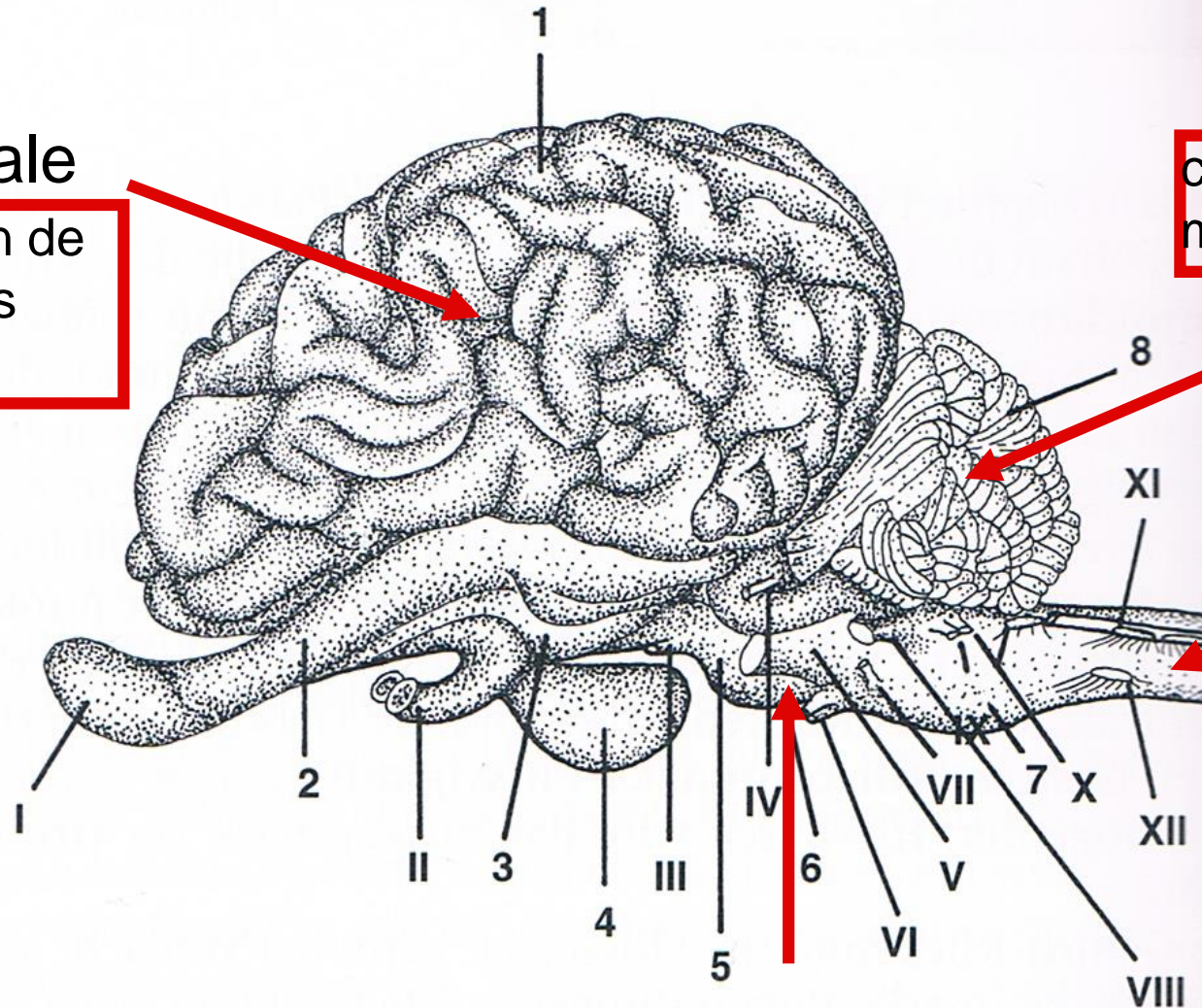
téleencéphale

perception, sensation de douleur, mouvements intentionnels

coordination des mouvements

cervelet

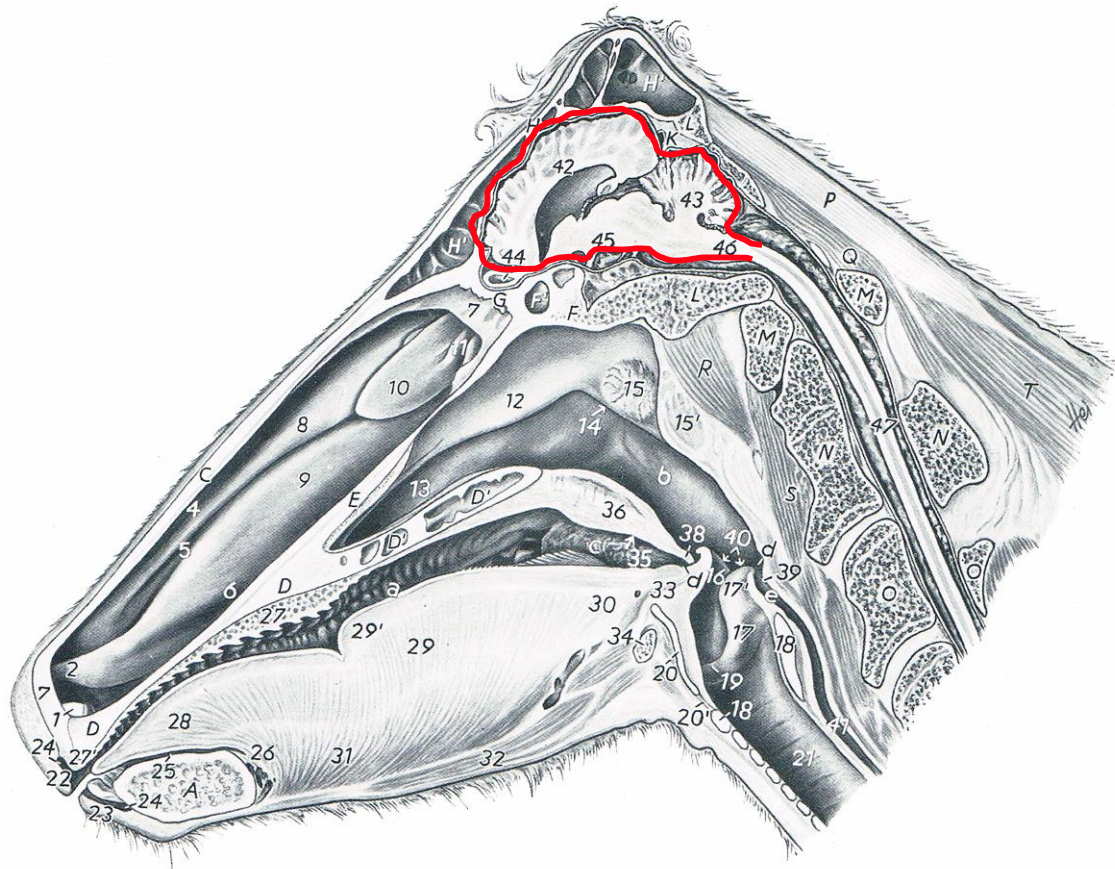
moelle épinière



trunc cérébral centre respiratoire, réflexes



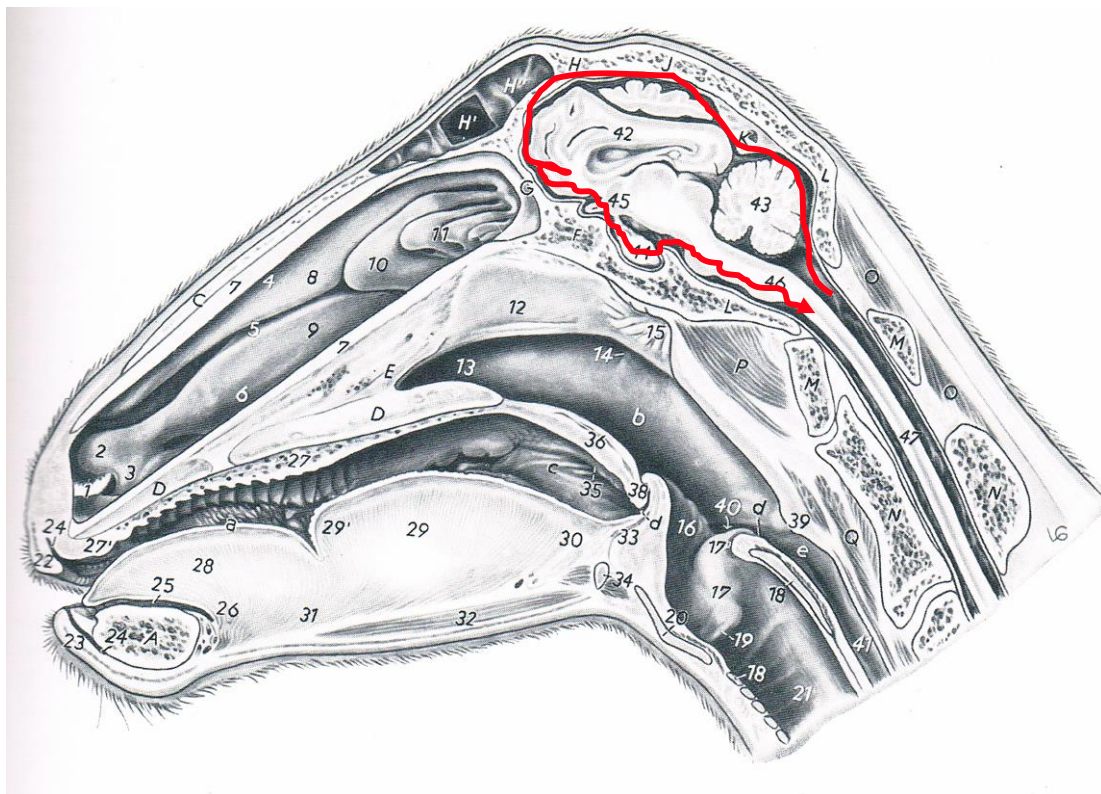
# Position du cerveau du bovin



Nickel, Schummer, Seiferle 1975



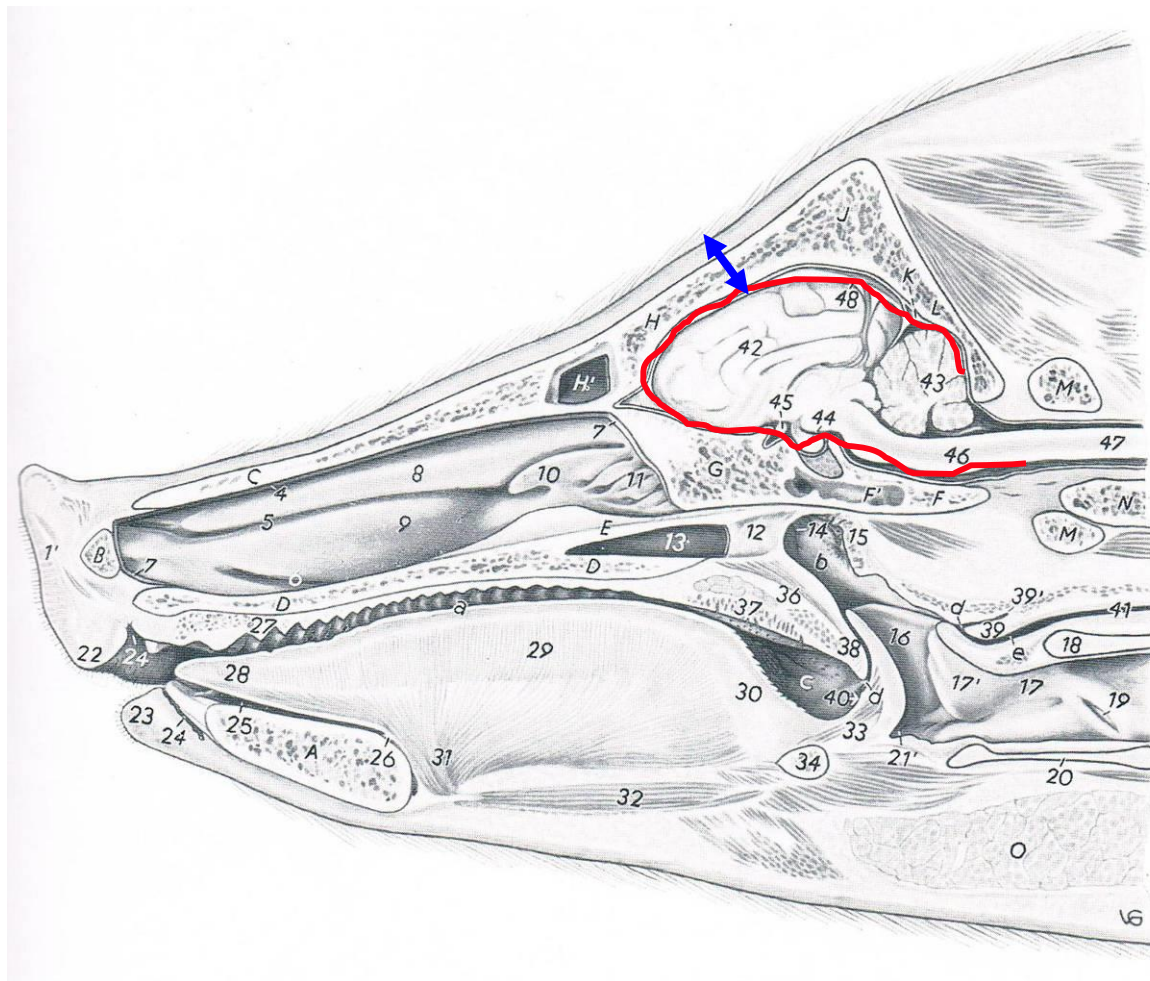
# Position du cerveau du mouton



Nickel, Schummer, Seiferle 1975



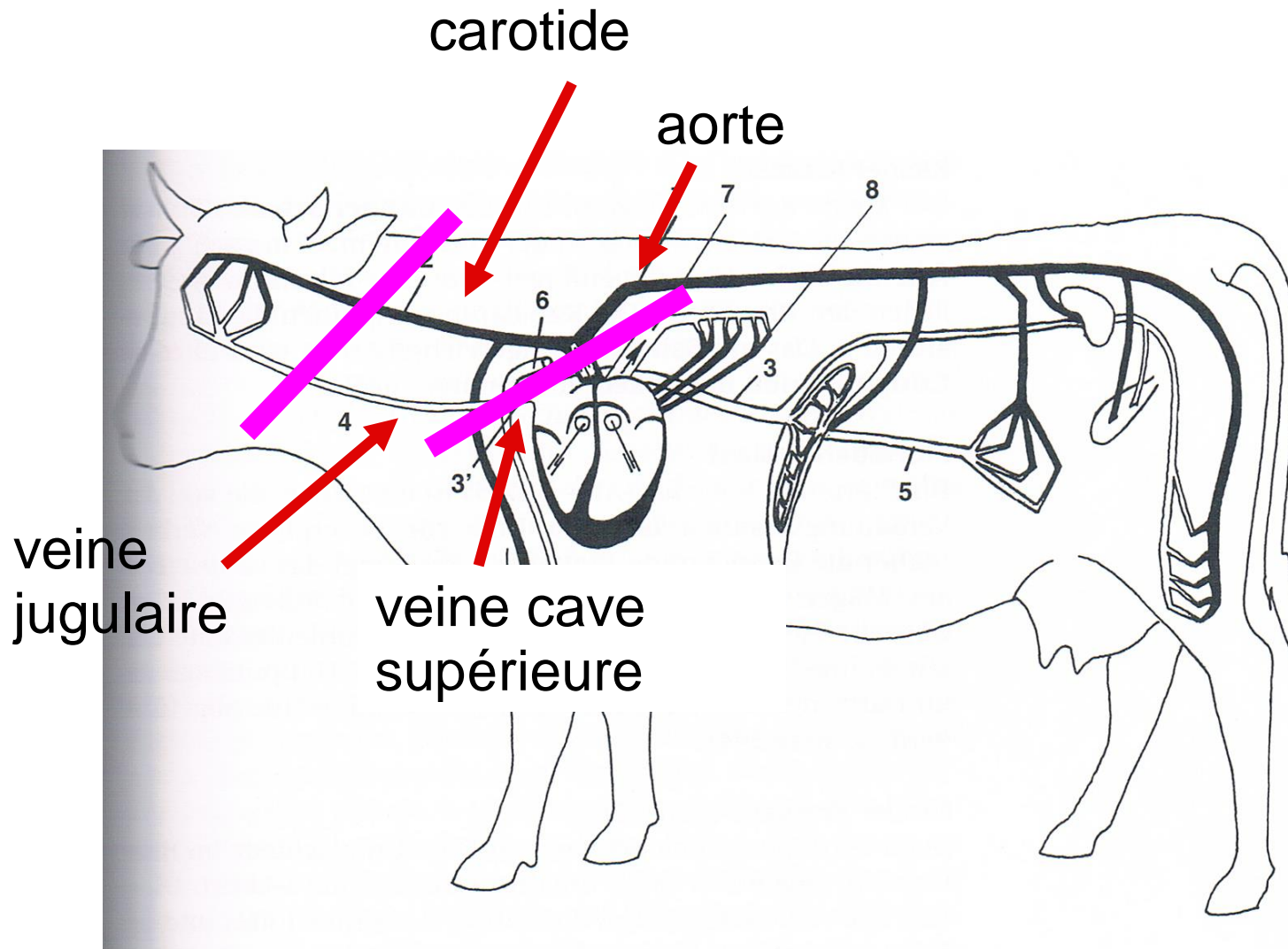
# Position du cerveau du porc



Nickel, Schummer, Seiferle 1975



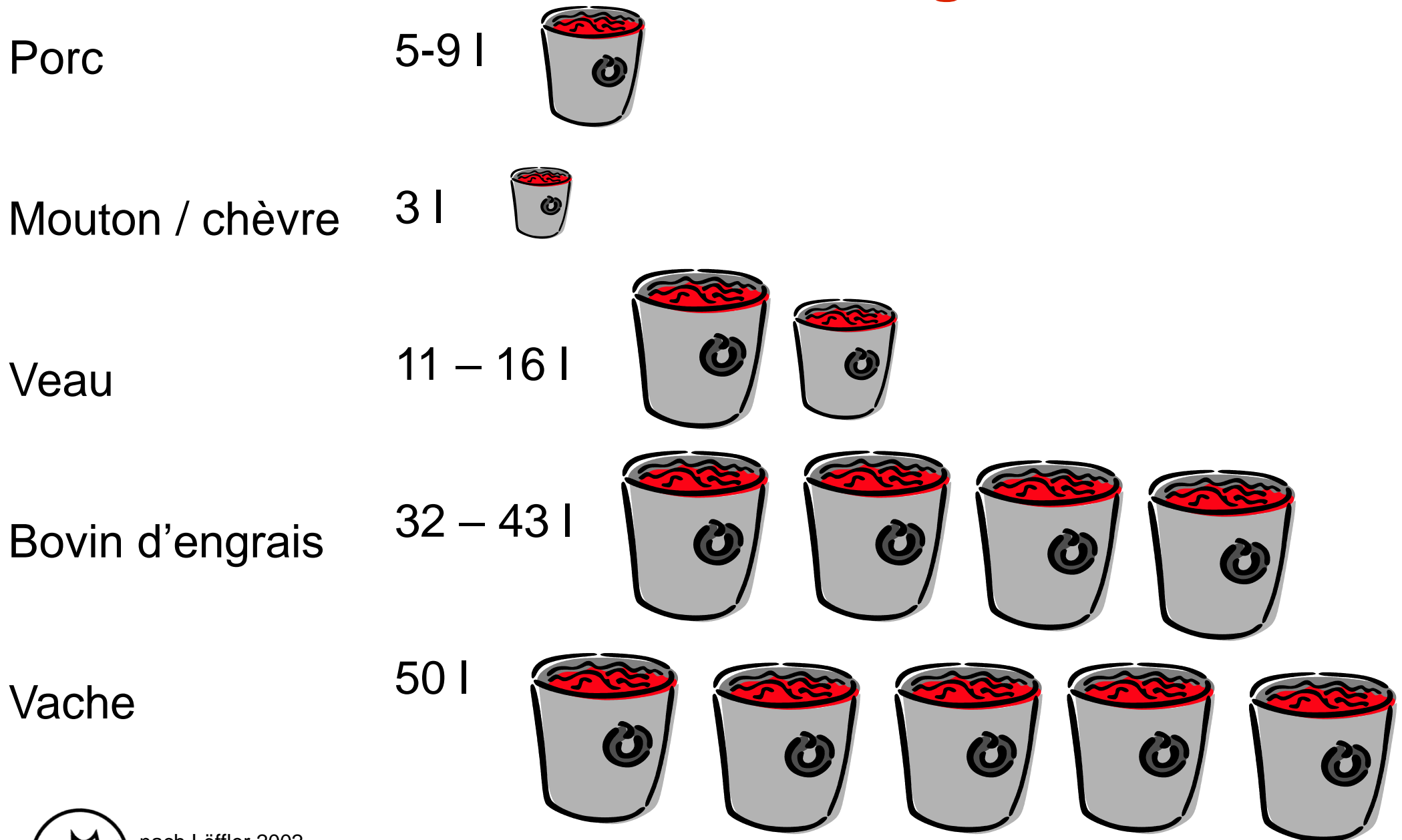
# Circulation sanguine



Löffler, 2002



# Quantité de sang



nach Löffler 2002