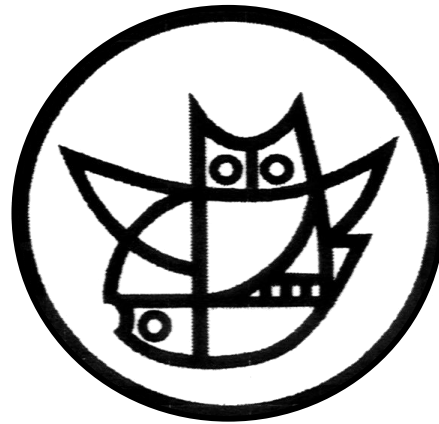


# Anatomie + Physiologie bei der Schlachtung



Kontrolldienst STS

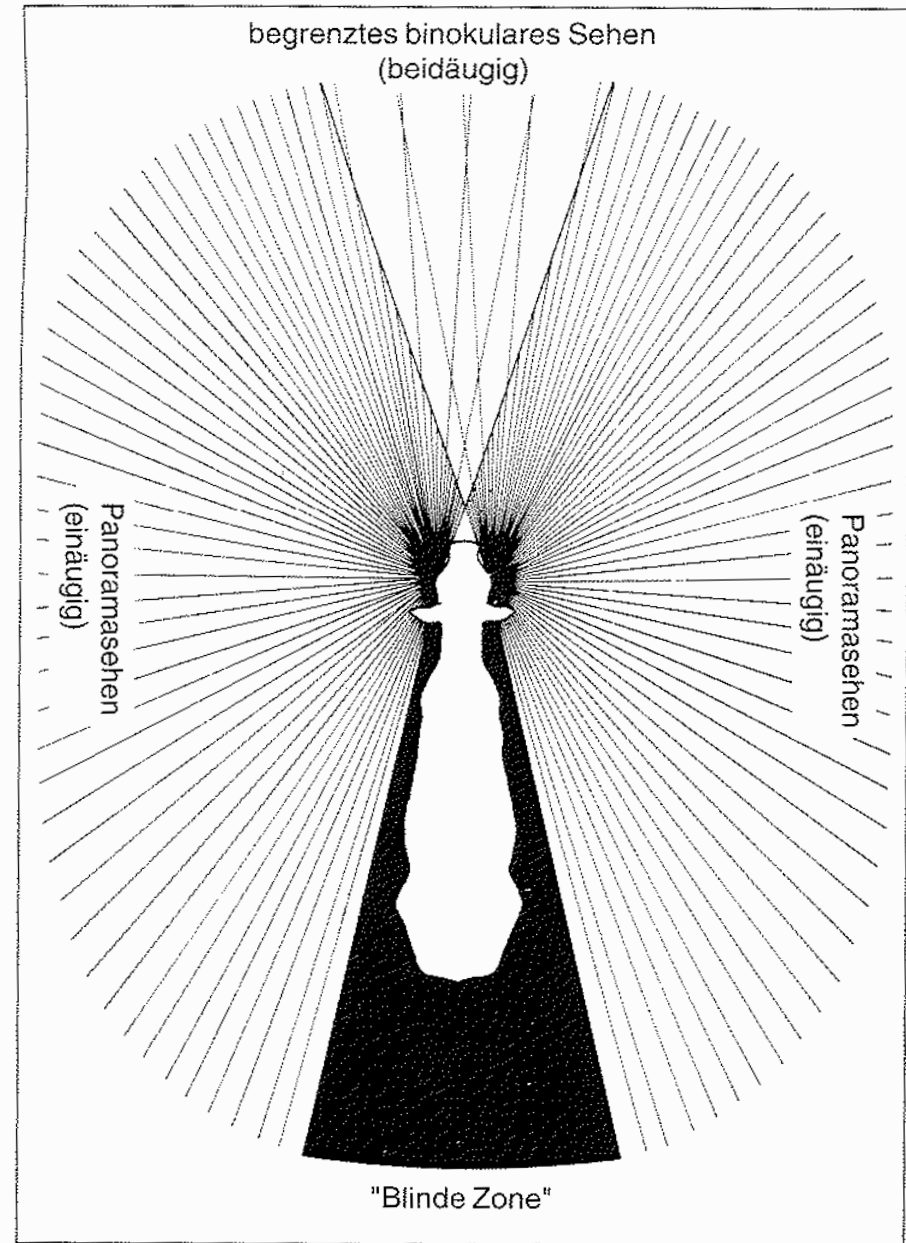
Ausbildung Schlachthof-Personal



# Augen



Abb. 2.3. Gesichtsfeld eines Rindes.



# Gehirn Rind

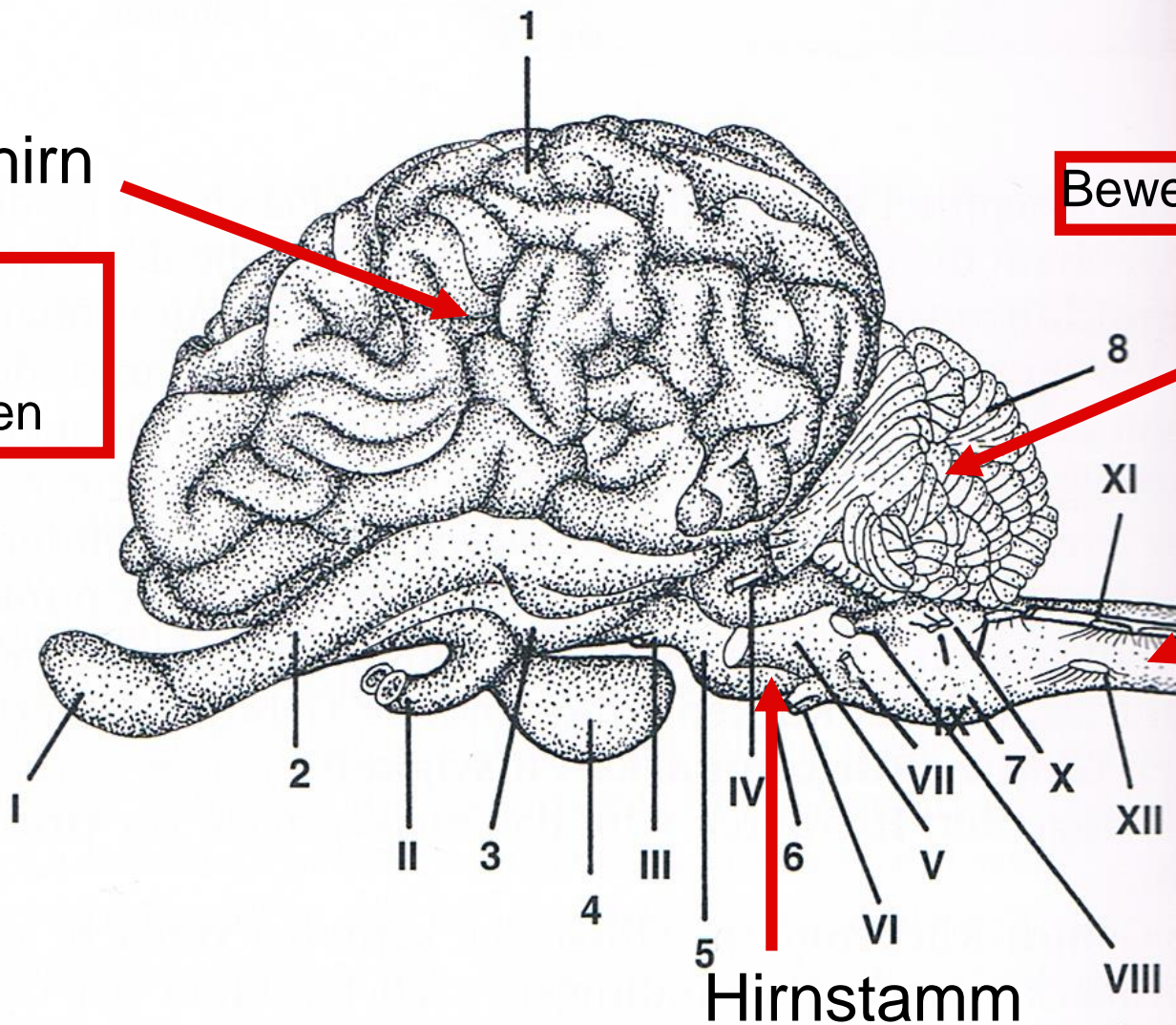
Grosshirn

Bewegungskoordination

Wahrnehmung,  
Schmerzempfinden,  
gewollte Bewegungen

Kleinhirn

Rücken-  
mark

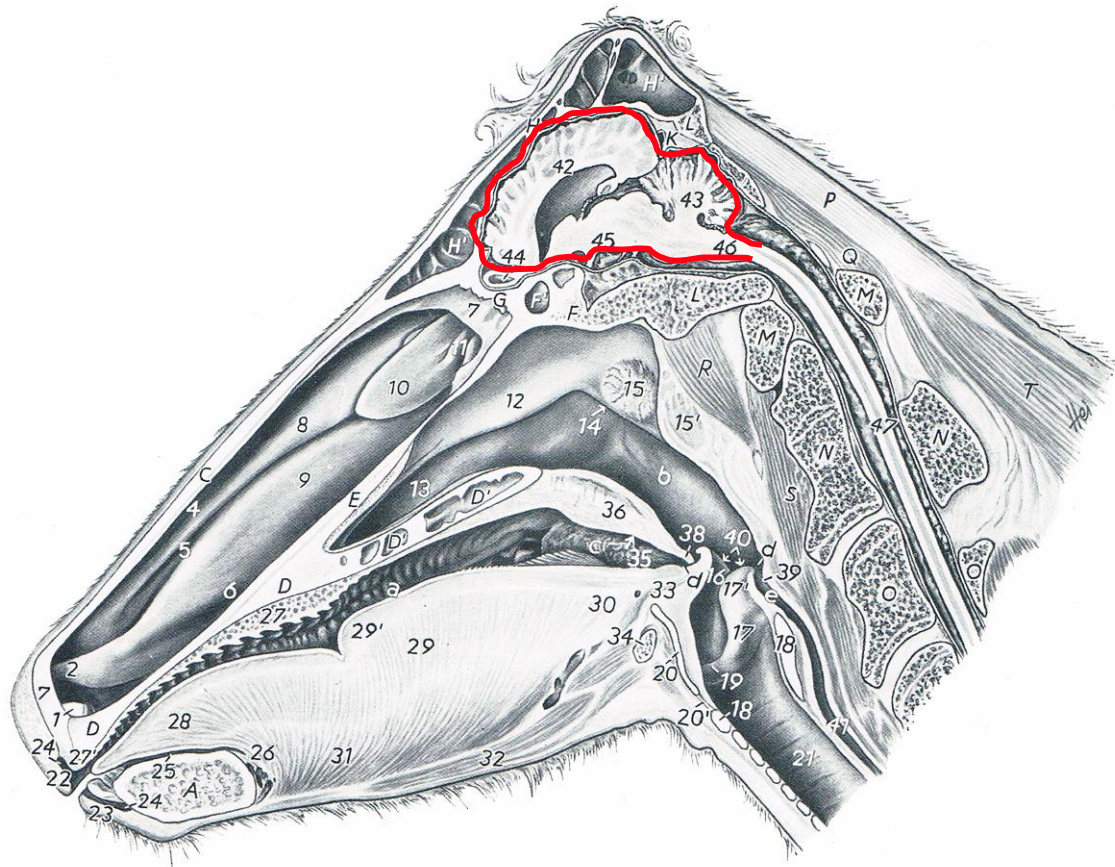


Hirnstamm

Atemzentrum, Reflexe



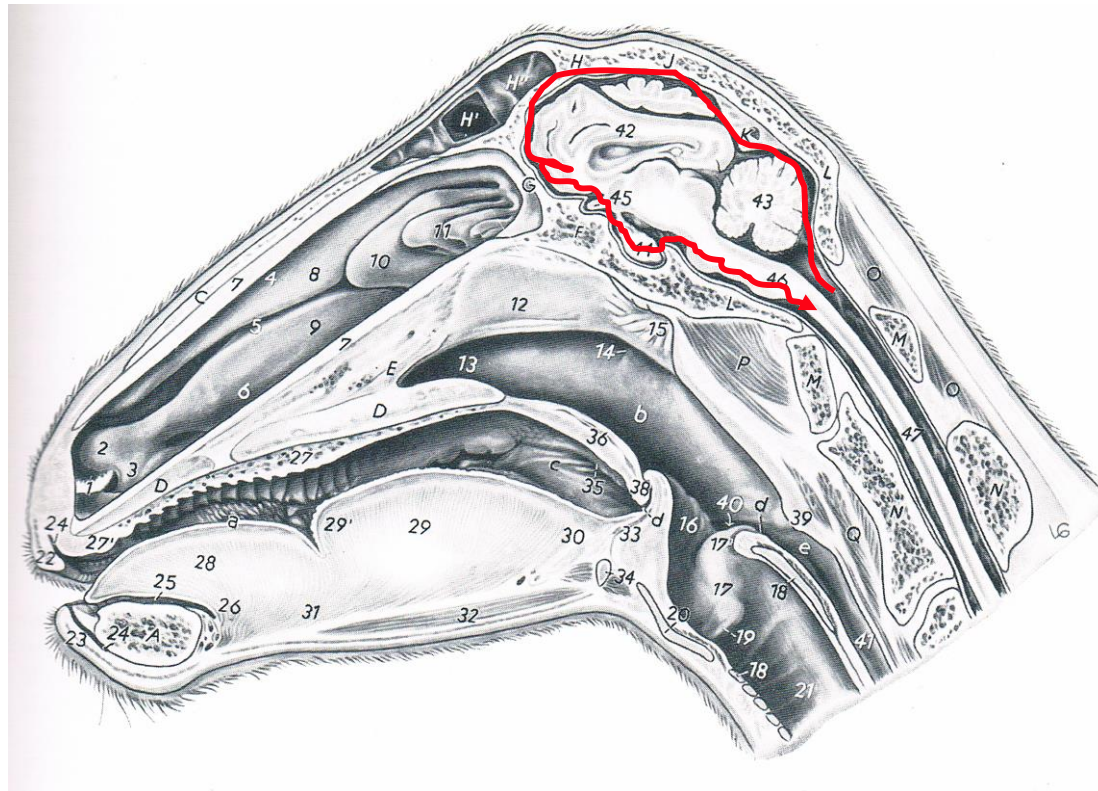
# Lage Gehirn Rind



aus: Nickel, Schummer, Seiferle 1975



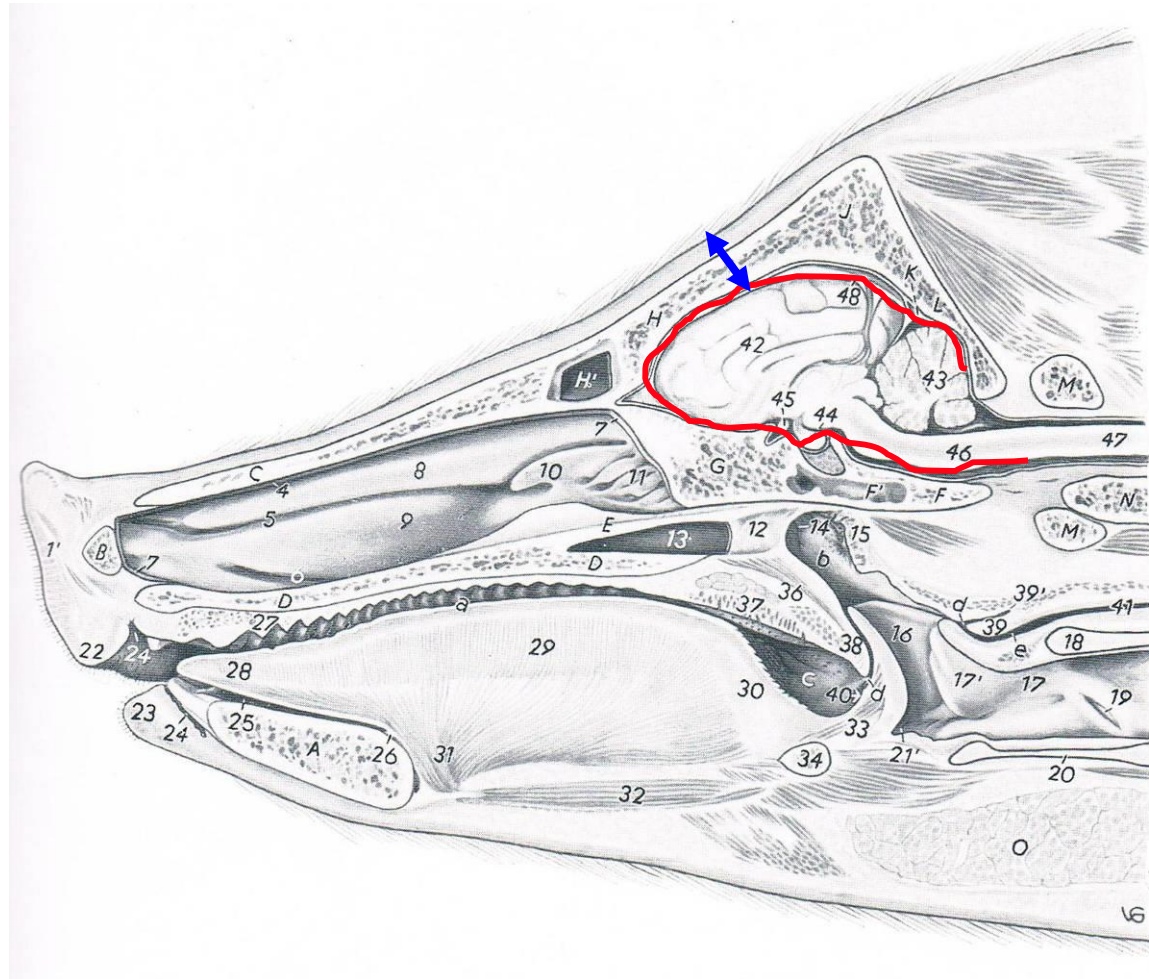
# Lage Gehirn Schaf



aus: Nickel, Schummer, Seiferle 1975



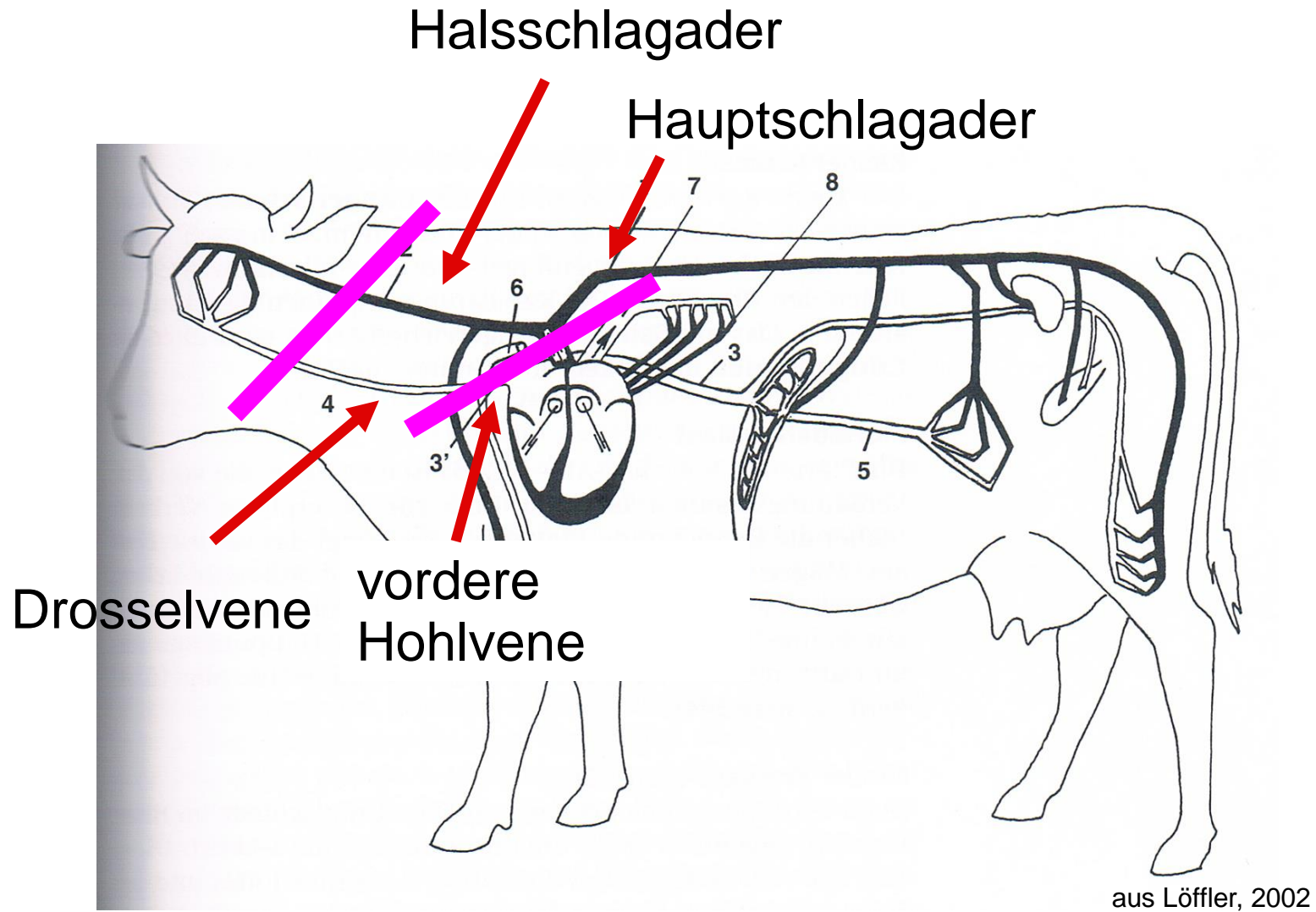
# Lage Gehirn Schwein



aus: Nickel, Schummer, Seiferle 1975



# Blutkreislauf



# Blutmenge

Schwein

5-9 l



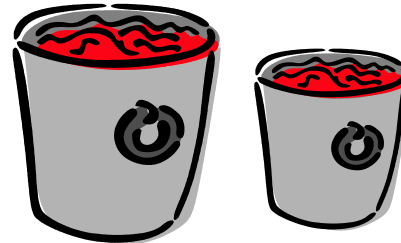
Schaf / Ziege

3 l



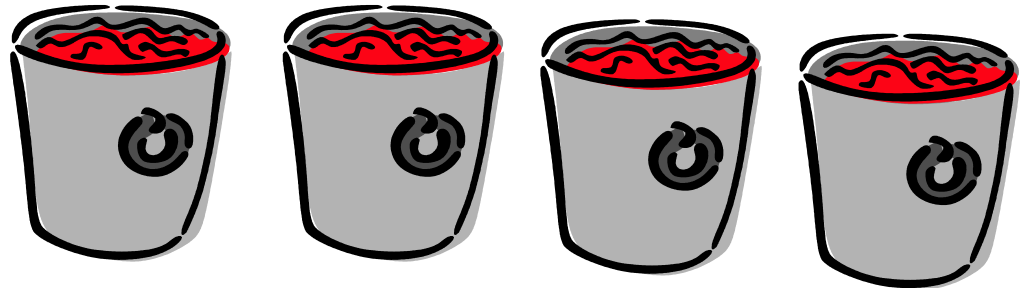
Kalb

11 – 16 l



Mastrind

32 – 43 l



Kuh

50 l



nach Löffler 2002